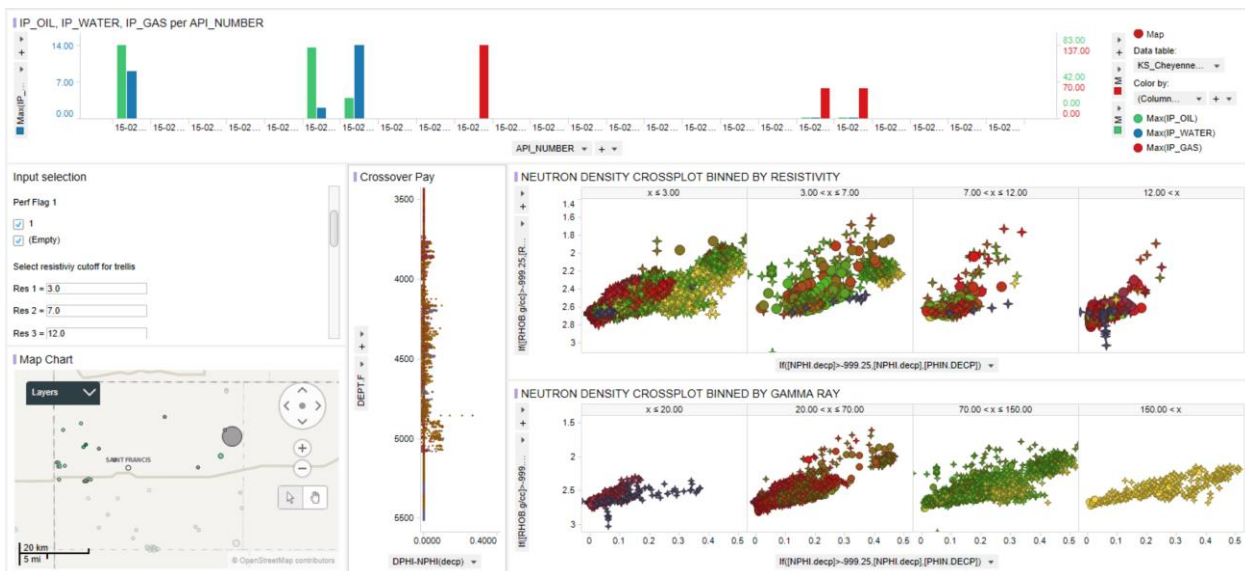




## BLUE RIVER ANALYTICS: GEOLOGY TEMPLATE

### Overview:

The Blue River Analytics Geology Template is an integrated approach to analyze geologic parameters and well performance in a dynamic centerpiece. Functionality allows for evaluation by wells, facies, formations, leases, operators or other attributes. Data types include LAS logs, zone or facies tops, perforations, cores and other downhole data points, which can all be tied together and queried throughout the project and visualizations. Common workflows include calculations between data points while allowing for input variables that can be adjusted on the fly. The geology template is 100% customizable to fit users end goals and available data.



Above is an example of the interaction between LAS logs, perforations, calculations, map view, and production. Starting with the neutron density cross plots moving



clockwise, the user can achieve the following: Identify any trends in neutron density and how perforations are distributed in the wells, cross plots below are binned by gamma ray (bottom) and resistivity (above), both in which are defined by the user using the input selections. Selecting trends within the cross plots will query calculated crossover pay to the left and cull the map view to related wells. Map view allows for any attributes to be displayed as shape, size and color where further selections can be made to populate the production graph above. Note this workflow can also work in reverse if the user prefers to view log characteristics by selecting production trends.

### **Key Benefits:**

- Expedite data connections and relationship realization
- Query between cross discipline data sets on the fly
- Perforation and behind pipe evaluation
- Evaluate sub facies, facies, or zone contribution
- Create moving variable calculation inputs for defined pay, lithology, etc.

### **About Blue River Analytics:**

Blue River Analytics makes our customers smarter. Utilizing deep expertise in the energy industry and TIBCO Spotfire, we create easy-to-use applications for visual and predictive analytics, enabling our customers to make faster, smarter decisions.

### **Contact:**

Blue River Analytics

[info@blueriveranalytics.com](mailto:info@blueriveranalytics.com)

(720) 295-7242