



BLUE RIVER ANALYTICS: PROBABILITY PLOT APPLICATION TEMPLATE

The Probability Plot application template from Blue River uses the advanced modeling power of Spotfire to interactively fit any data to statistical distributions. This application allows the user to select and drill down on any measures and dimensions for analysis through Spotfire's intuitive interface, and view the probability values in a visual environment.

Using Spotfire's built-in TERR (TIBCO Enterprise Runtime for R) statistical engine, this application provides maximum-likelihood estimates for the lognormal distribution, which allows for easy comparison of the empirical statistics to the theoretical fit.

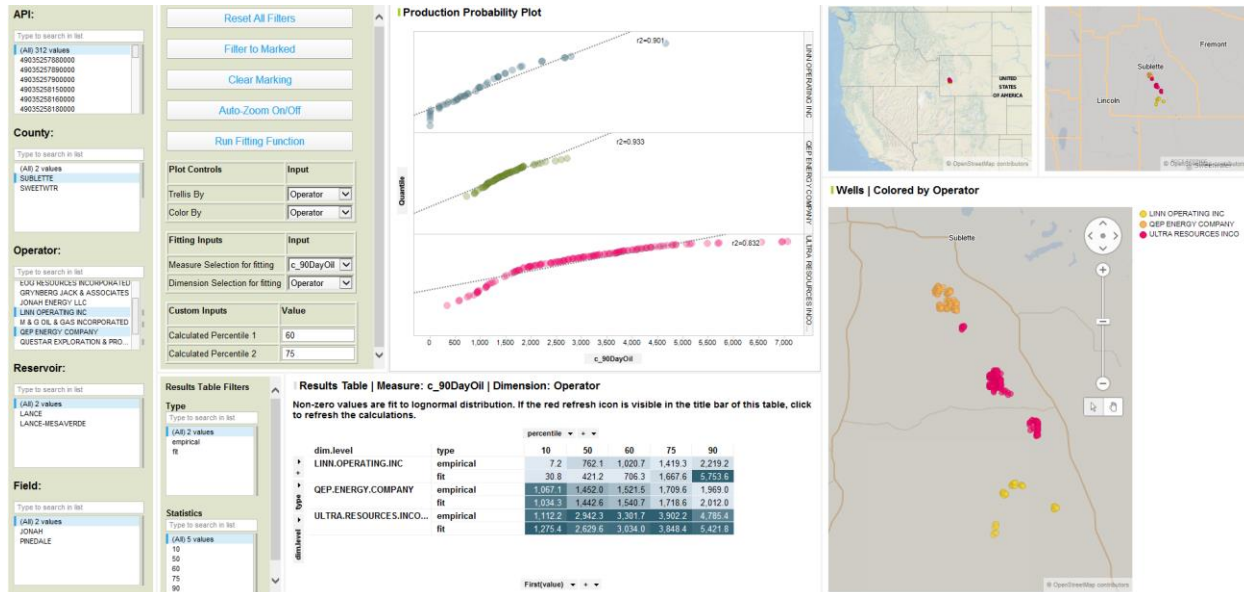
Business applications include petrophysical modeling, completions analysis, production surveillance, and more. This application can be used separately with any data source, or can be added to enhance any existing Spotfire projects.

Key benefits:

- Flexibly fit any data set to statistical distributions and visualize the results.
- Choose single or multiple measures and dimensions for fitting in an intuitive interface.
- Easily return additional information about the data set, including goodness-of-fit, ratios like p10 to p90, bootstrap statistics, or fitting to other distributions.



Production Probability Template:



About Blue River Analytics:

Blue River Analytics makes our customers smarter. Utilizing deep expertise in the energy industry and TIBCO Spotfire, we create easy-to-use applications for visual and predictive analytics, enabling our customers to make faster, smarter decisions.

Contact:

Blue River Analytics

info@blueriveranalytics.com

(720) 295-7242